

Model : Corium



maple INTERIORS

57, Tampines Avenue 1
#02-02, Singapore 529774
Tel : 6241 7887 Fax: 6449 7203
Email: enquiry@mapleint.com Website: www.mapleint.com

Model : LEX



maple INTERIORS

57, Tampines Avenue 1
#02-02, Singapore 529774
Tel : 6241 7887 Fax: 6449 7203
Email: enquiry@mapleint.com Website: www.mapleint.com

Model : OTTO



maple INTERIORS

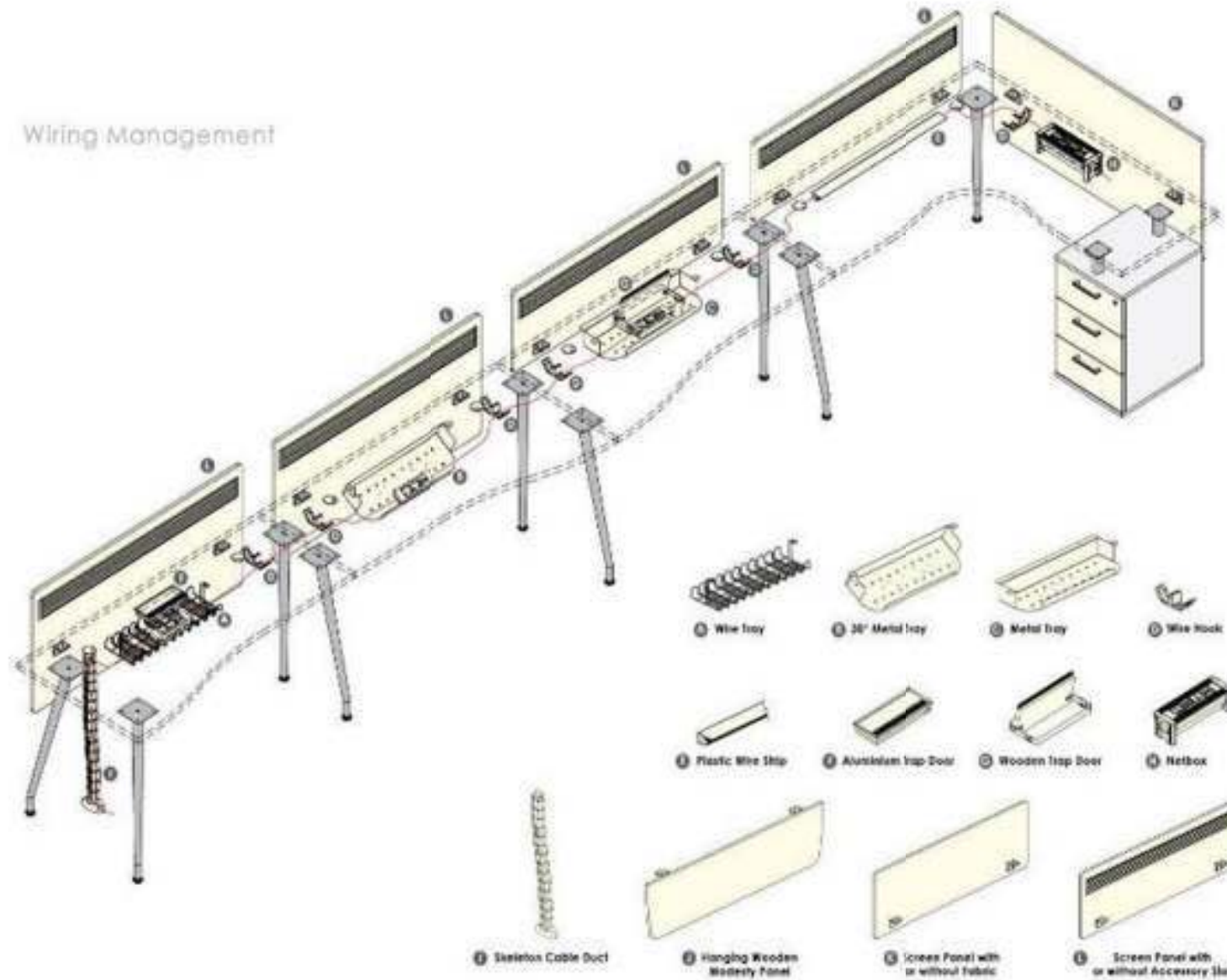
57, Tampines Avenue 1

#02-02, Singapore 529774

Tel : 6241 7887 Fax: 6449 7203

Email: enquiry@mapleint.com Website: www.mapleint.com

Wiring Management



OTTO

maple INTERIORS

57, Tampines Avenue 1

#02-02, Singapore 529774

Tel : 6241 7887 Fax: 6449 7203

Email: enquiry@mapleint.com Website: www.mapleint.com

Model : MULTI



maple INTERIORS

57, Tampines Avenue 1

#02-02, Singapore 529774

Tel : 6241 7887 Fax: 6449 7203

Email: enquiry@mapleint.com Website: www.mapleint.com

Accessories



Multi Purpose Tray



Phone Holder



File Holder



Stationery Tray



Pen Holder



Notepad Tray



Nametag Holder



Stationery Tray



Butterfly LCD Monitor Arm



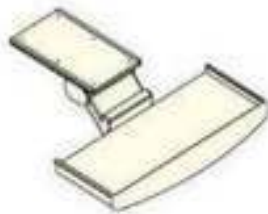
L3 Series LCD Monitor Arm



460 LCD Monitor Arm



Keyboard Tray



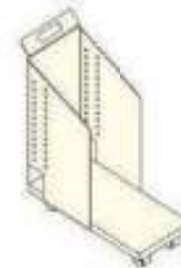
Adjustable Keyboard Tray



Adjustable CPU Holder



Adjustable CPU Holder



CPU Holder



In-Desk USB Hub



Skeleton Cable Duct



Hanging Wooden Modesty Panel



Screen panel

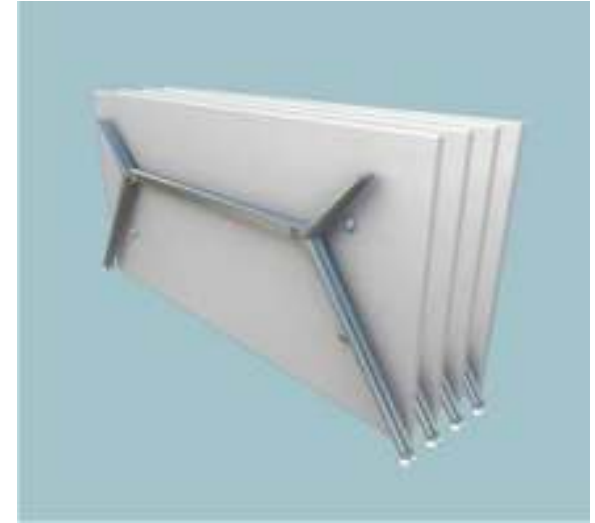
maple INTERIORS

57, Tampines Avenue 1

#02-02, Singapore 529774

Tel : 6241 7887 Fax: 6449 7203

Email: enquiry@mapleint.com Website: www.mapleint.com



HEVOLE

ICON



FOCUS



maple INTERIORS

57, Tampines Avenue 1
#02-02, Singapore 529774
Tel : 6241 7887 Fax: 6449 7203
Email: enquiry@mapleint.com Website: www.mapleint.com



LAVINA



GRANDEE

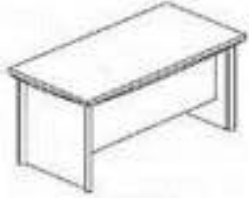


Montini

maple INTERIORS

57, Tampines Avenue 1
#02-02, Singapore 529774
Tel : 6241 7887 Fax: 6449 7203
Email: enquiry@mapleint.com Website: www.mapleint.com

Standard Desk

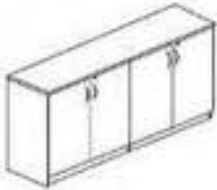


EX-GDDK 180
L 1800mm x B 900mm x H 760mm

EX-GDDK 200
L 2000mm x B 900mm x H 760mm

EX-GDDK 220
L 2200mm x B 900mm x H 760mm

Credenza



EX-GDDZ 184
L 1800mm x B 450mm x H 750mm

Side Table



EX-GDST 60
L 600mm x B 600mm x H 450mm

Mobile Pedestal



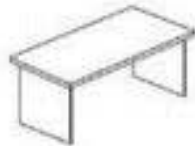
EX-GDMP 30
L 420mm x B 505mm x H 660mm

Credenza



EX-GLDZ 184
L 1800mm x B 450mm x H 750mm

Center Table



EX-GDCR 120
L 1200mm x B 600mm x H 450mm

2-Door Side Return



EX-GDSR 20
L 1000mm x B 450mm x H 660mm

4-Door Cabinet



EX-GDHC 200C
L 900mm x B 450mm x H 1980mm

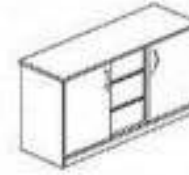
EX-GDHC 180B
L 800mm x B 450mm x H 1880mm

Discussion Table



EX-GDGT 120
ø 1200mm x H 750mm

2-Door + 3-Drawer Side Return



EX-GDSR 30
L 1360mm x B 450mm x H 660mm

Half Glass Cabinet



EX-GDHG 200C
L 900mm x B 450mm x H 1980mm

EX-GDHG 180B
L 800mm x B 450mm x H 1880mm

Meeting Table



EX-GDMT 200
L 2000mm x B 1000mm x H 750mm

EX-GDMT 240
L 2400mm x B 1200mm x H 750mm

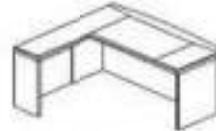
montini Specifications



EA-MTDR 200L
L 2200mm x B 900mm x H 750mm
EA-MTDR 175L
L 1750mm x B 420mm x H 750mm



EA-MTDR 200R
L 2200mm x B 900mm x H 750mm
EA-MTDR 175R
L 1750mm x B 420mm x H 750mm



EA-MTDR 200
L 2200mm x B 900mm x H 750mm
EA-MTDR 175
L 1750mm x B 420mm x H 750mm



EA-MTDR 100
L 2200mm x B 900mm x H 750mm
EA-MTDR 100
L 2200mm x B 900mm x H 750mm
EA-MTDR 175R
L 1750mm x B 420mm x H 750mm



EA-MP 10
L 450mm x B 450mm x H 1100mm



EA-MP 20
L 450mm x B 450mm x H 950mm



EA-MMP 20
L 420mm x B 520mm x H 950mm



EA-MFP 20
L 420mm x B 520mm x H 950mm



EA-PU18 M

Credenza



EA-ACC 184
L 1800mm x B 420mm x H 750mm

2-Door Cabinet



EA-VTD 90-200
L 900mm x B 450mm x H 2100mm

Glass Door Cabinet



EA-VGD 90-200
L 900mm x B 450mm x H 2100mm

Half Glass Cabinet



EA-EHD 200C
L 900mm x B 450mm x H 1900mm

Discussion Table



EA-VDT 181B
ø 1700mm x H 750mm
EA-VDT 181V
ø 1800mm x H 750mm

Quarter Joint



EA-VQJ 75-B
ø 700mm x H 750mm
EA-VQJ 75-V
ø 700mm x H 750mm

Connection Table



EA-VCT 1M
L 1800mm x B 1100mm x H 750mm
EA-VCT 2M
L 2400mm x B 1100mm x H 750mm

Conference Table



EA-VCT 100
L 2000mm x B 1200mm x H 750mm
EA-VCT 80
L 2000mm x B 1000mm x H 750mm

Conference Table



PS-CPCT 210
L 2100mm x B 1200mm x H 750mm

Conference Table



PS-CPCT 240
L 2400mm x B 1200mm x H 750mm

Side Table



EA-VST 80
L 800mm x B 400mm x H 450mm

Center Table



EA-VCR 120
L 1200mm x B 600mm x H 450mm

Round Table



EA-VRT 120
ø 1200mm x H 750mm



maple INTERIORS

57, Tampines Avenue 1

#02-02, Singapore 529774

Tel : 6241 7887 Fax: 6449 7203

Email: enquiry@mapleint.com Website: www.mapleint.com

maple INTERIORS

57, Tampines Avenue 1

#02-02, Singapore 529774

Tel: 6241 7887 Fax: 6449 7203

Email: enquiry@mapleint.com Website: www.mapleint.com

Office Seating

Model	Specifications		
 <p data-bbox="512 495 592 524">8817H</p>	<p data-bbox="639 495 831 524">High Back Chair</p> <p data-bbox="639 528 1086 557">Back : Elastomer/Nylon Mesh</p> <p data-bbox="639 562 1305 591">Seat: : Elastomer/Nylon Mesh Or Fabric Sponge</p> <p data-bbox="639 595 943 624">Armrest : Adjustable</p> <p data-bbox="639 629 991 658">Base : Nylon "Rocket"</p> <p data-bbox="639 663 1031 692">Headrest : Adjustable / Mesh</p> <p data-bbox="639 696 1289 725">Mechanism : Mono Synchro with 3 Positions Tilt Lock</p>		
 <p data-bbox="512 927 576 956">8817</p>	<p data-bbox="639 927 820 956">Mid Back Chair</p> <p data-bbox="639 960 1086 990">Back : Elastomer/Nylon Mesh</p> <p data-bbox="639 994 1305 1023">Seat: : Elastomer/Nylon Mesh Or Fabric Sponge</p> <p data-bbox="639 1028 943 1057">Armrest : Adjustable</p> <p data-bbox="639 1061 991 1090">Base : Nylon "Rocket"</p> <p data-bbox="639 1095 1289 1124">Mechanism : Mono Synchro with 3 Positions Tilt Lock</p>		
			
<p data-bbox="193 1727 496 1787">With Fabric/Sponge Seat & Headrest</p>	<p data-bbox="533 1727 772 1787">With Fabric/Sponge Seat</p>	<p data-bbox="847 1727 1102 1787">With Aluminium Base & Headrest</p>	<p data-bbox="1171 1727 1426 1756">With Aluminium Base</p>

maple INTERIORS

57, Tampines Avenue 1

#02-02, Singapore 529774

Tel: 6241 7887 Fax: 6449 7203

Email: enquiry@mapleint.com Website: www.mapleint.com

Office Seating

Model	Specifications
 <p data-bbox="512 495 592 524">8838H</p>	<p data-bbox="639 495 831 524">High Back Chair</p> <p data-bbox="639 528 1086 557">Back : Elastomer/Nylon Mesh</p> <p data-bbox="639 562 1305 591">Seat: : Elastomer/Nylon Mesh Or Fabric Sponge</p> <p data-bbox="639 595 943 624">Armrest : Adjustable</p> <p data-bbox="639 629 991 658">Base : Nylon "Rocket"</p> <p data-bbox="639 663 1031 692">Headrest : Adjustable / Mesh</p> <p data-bbox="639 696 1289 725">Mechanism : Mono Synchro with 3 Positions Tilt Lock</p>
 <p data-bbox="512 927 576 956">8838</p>	<p data-bbox="639 927 820 956">Mid Back Chair</p> <p data-bbox="639 960 1086 990">Back : Elastomer/Nylon Mesh</p> <p data-bbox="639 994 1305 1023">Seat: : Elastomer/Nylon Mesh Or Fabric Sponge</p> <p data-bbox="639 1028 943 1057">Armrest : Adjustable</p> <p data-bbox="639 1061 991 1090">Base : Nylon "Rocket"</p> <p data-bbox="639 1095 1289 1124">Mechanism : Mono Synchro with 3 Positions Tilt Lock</p>
	<p data-bbox="193 1727 496 1787">With Fabric/Sponge Seat & Headrest</p> <p data-bbox="533 1727 772 1787">With Fabric/Sponge Seat</p> <p data-bbox="839 1727 1094 1787">With Aluminium Base & Headrest</p> <p data-bbox="1171 1727 1426 1756">With Aluminium Base</p>

1. All Prices are exclusive of GST

2. We reserve the right to change the price without prior notice.

maple INTERIORS

57, Tampines Avenue 1

#02-02, Singapore 529774

Tel: 6241 7887 Fax: 6449 7203

Email: enquiry@mapleint.com Website: www.mapleint.com

Office Seating

Model	Specifications
 <p>8813</p>	<p>Mid Back Chair</p> <p>Back : Fabric Mesh</p> <p>Seat: : Fabric / Sponge</p> <p>Armrest : Fixed</p> <p>Base : Nylon "Rocket"</p> <p>Mechanism : Normal</p> <p>Also Available 8813H High Back with Headrest</p>
 <p>8826</p>	<p>Low Back Chair</p> <p>Back : Fabric Mesh</p> <p>Seat : Fabric / Sponge</p> <p>Armrest : Fixed</p> <p>Base : Nylon "Rocket"</p> <p>Mechanism : Normal</p>
 <p>8847</p>	<p>Low Back Chair</p> <p>Back : Nylon Mesh</p> <p>Seat : Fabric / Sponge</p> <p>Armrest : Fixed</p> <p>Base : Nylon "Rocket"</p> <p>Mechanism : Normal</p>

maple INTERIORS

57, Tampines Avenue 1

#02-02, Singapore 529774

Tel: 6241 7887 Fax: 6449 7203

Email: enquiry@mapleint.com Website: www.mapleint.com

Office Seating

Model	Specifications
 A red office chair with a black seat and base, featuring a five-point base with casters and a central column. The backrest is red with a mesh-like texture. <p data-bbox="512 479 576 510">8735</p>	<p data-bbox="639 479 826 510">Low Back Chair</p> <p data-bbox="639 512 967 544">Back : Fabric Mesh</p> <p data-bbox="639 546 1007 577">Seat: : Fabric / Sponge</p> <p data-bbox="639 580 884 611">Armrest : Fixed</p> <p data-bbox="639 613 995 645">Base : Nylon "Rocket"</p> <p data-bbox="639 647 906 678">Mechanism : Normal</p>
 A black office chair with a black seat and base, featuring a five-point base with casters and a central column. The backrest is black with a mesh-like texture. <p data-bbox="512 981 576 1012">8755</p>	<p data-bbox="639 981 826 1012">Low Back Chair</p> <p data-bbox="639 1014 967 1046">Back : Fabric Mesh</p> <p data-bbox="639 1048 1007 1079">Seat : Fabric / Sponge</p> <p data-bbox="639 1081 1134 1113">Armrest : Fixed (Moulded with Back)</p> <p data-bbox="639 1115 995 1146">Base : Nylon "Rocket"</p> <p data-bbox="639 1149 906 1180">Mechanism : Normal</p>